

# plato

Your serving Cobot



## Delivery and Collecting Accessories

Manufacturer: Aldebaran  
Original instructions: English

Document version: A01

Use Case: Plato by Aldebaran is a serving Cobot designed to assist staff in restaurants (commercial environments) by delivering dishes to customers and collecting dirty dishes to clear tables.

Model: E02100

# Table of contents

---

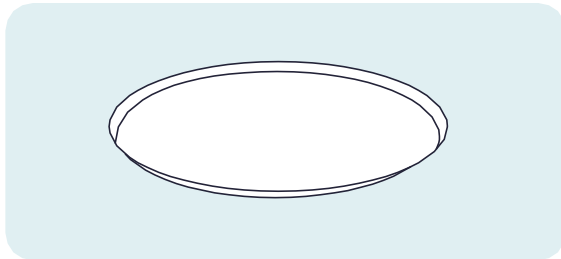
<b>Description</b> .....	p. 3
<b>Safety</b> .....	p. 4
<b>Usage</b> .....	p. 6
<b>Specifications</b> .....	p. 8
<b>More information</b> .....	p. 8

# Description

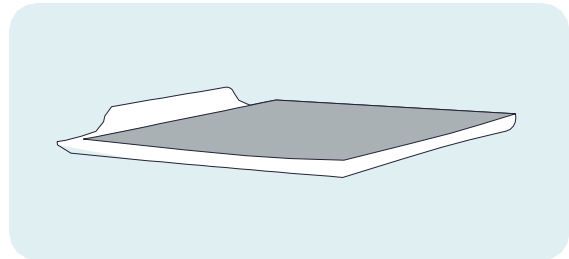
---

1. Drink holder (available soon)

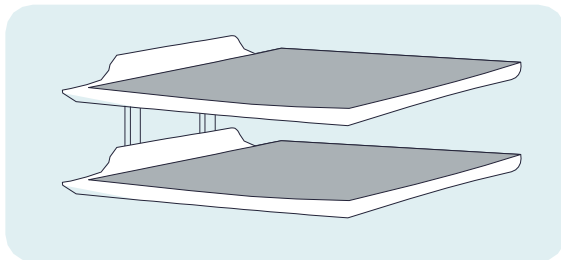
2. Trays



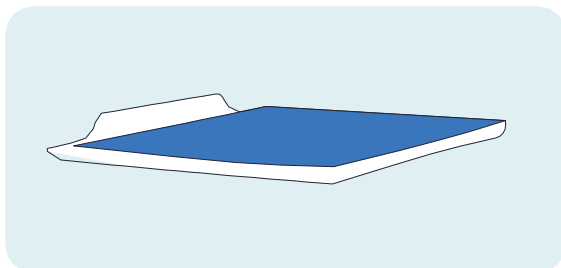
a. Round tray



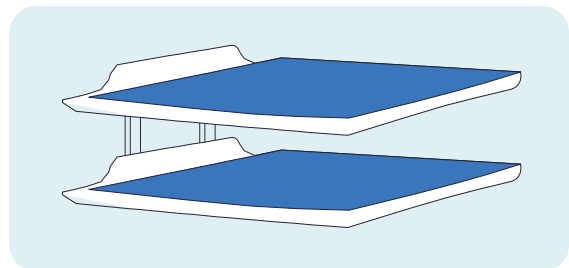
b. Single rectangular tray (available soon)



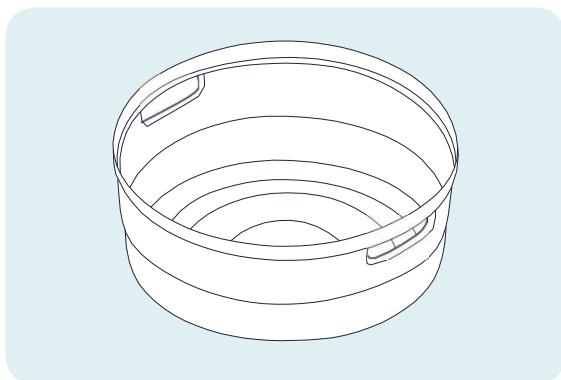
c. Double rectangular tray (available soon)



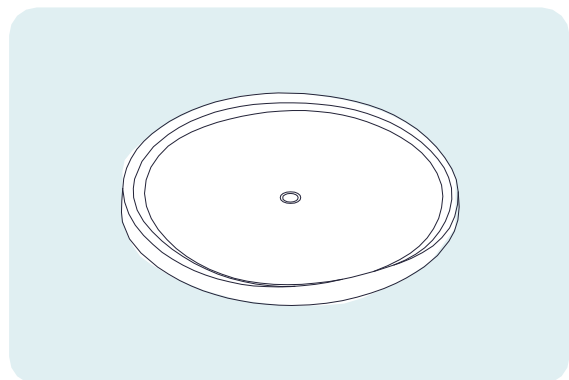
d. Anti-slip mat (available soon)



3. Collecting



a. Collecting tub

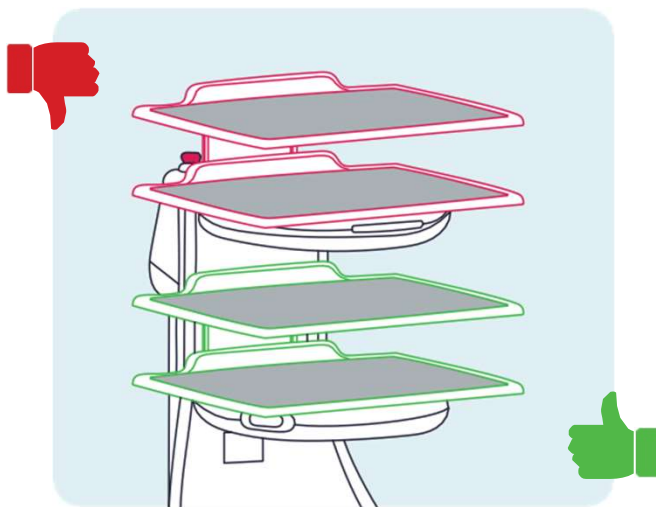


b. Collecting top cover

# Safety

---

- ▶ Plato's Emergency button must be accessible from 360° at all times
- ▶ Do not use the Double rectangular tray, Collecting tub or any large accessories on Plato's Top shelf
  - ▷ Use ONLY the Single tray or the Round Tray on the Top shelf
  - ▷ Use the Double tray on the Middle shelf ONLY
  - ▷ Use the Collecting tub on the Bottom shelf ONLY

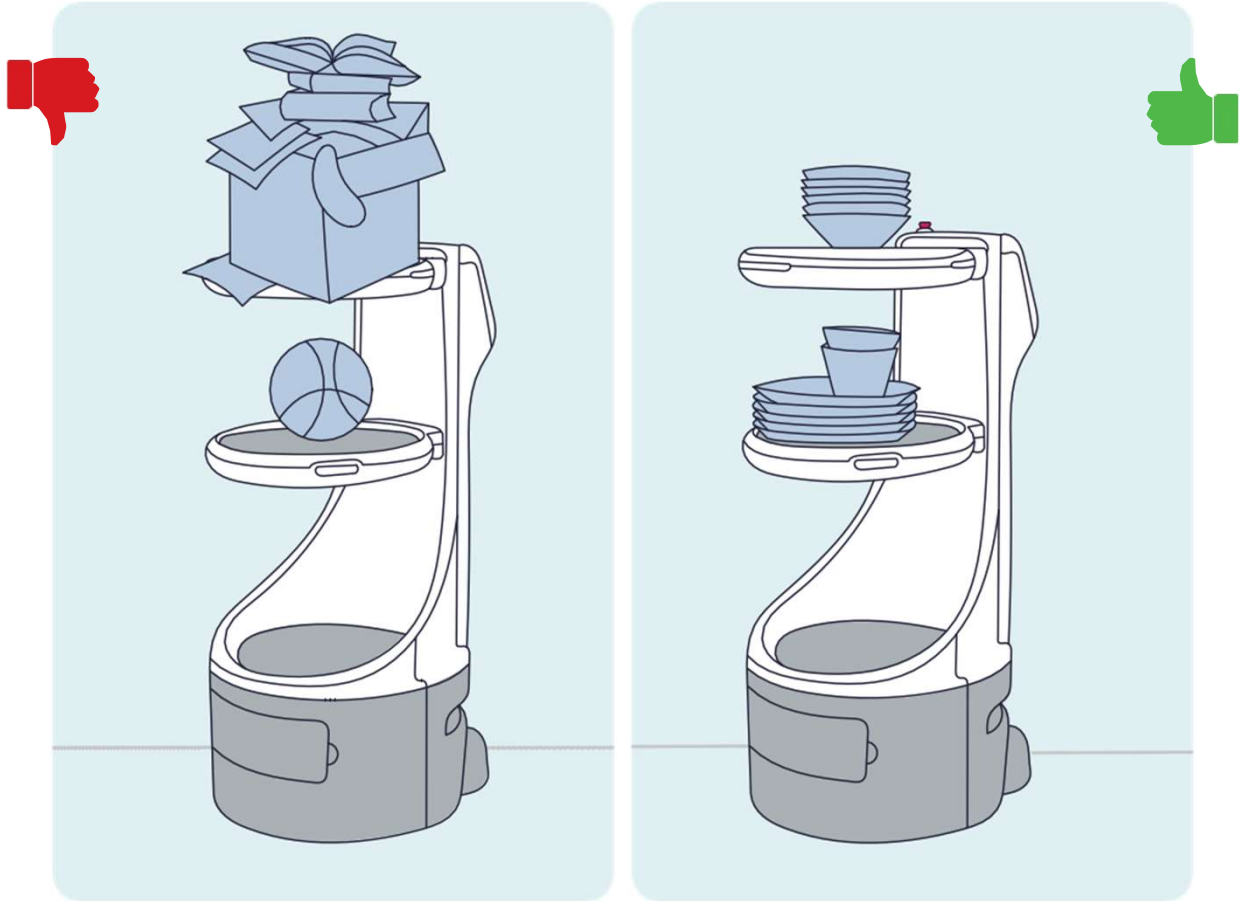


Make sure the accessory and its contents are stable before you begin delivering or collecting with Plato



**Maximum load including accessories:**  
**Top and Middle shelves: 10 kg each**  
**Bottom shelf: 20 kg**

- Distribute extra load so that lighter loads are on the upper shelves and heavier loads are on the Bottom shelf



## Food Contact

If an accessory below is not compliant with the Food Contact Directive, do not place unprotected food (pieces of bread, fruit with edible skin, etc.) directly on it.

	FOOD CONTACT
Single rectangular tray	NO
Double rectangular tray	NO
Anti-slip mat	YES
Round tray	YES
Collecting tub	NO
Collecting top cover	NO

# Usage

---

You can increase the payload surface of Plato's shelves with easy to install delivery and collecting accessories.

Plato is stable and safe during navigation with loaded delivery and collecting accessories.

Clean Plato's delivery and collecting accessories with a soft dry cloth

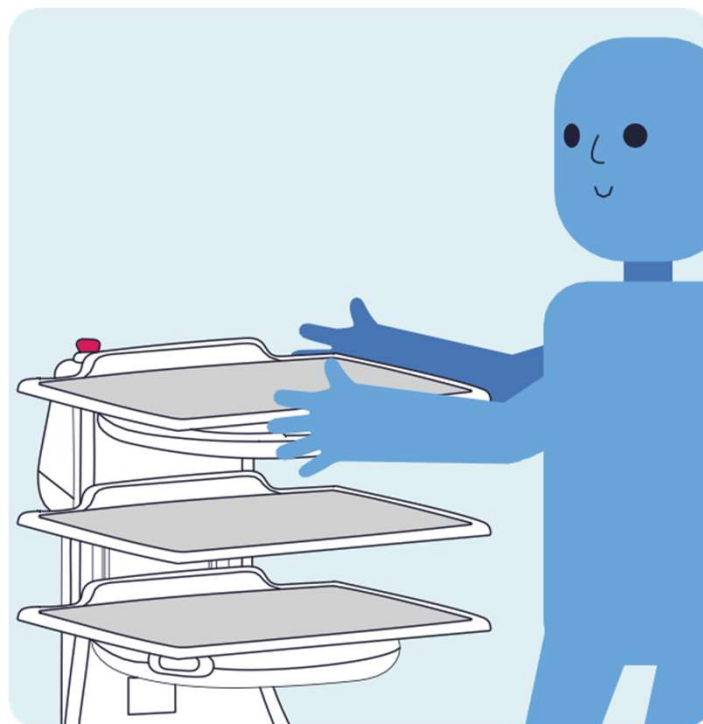


Please use dishes to deliver food with the **Rectangular trays** as they are not suitable for food contact.

## Installing the trays

---

Place trays on the dedicated shelves, no tools needed



## Setting up Plato's weight sensors

---

When you use accessories, the weight sensors on each shelf need to be re-calibrated



- ▶ Go to Plato's settings
- ▶ Press the Weight sensors button
- ▶ Toggle the button ON to activate weighing
- ▶ Place empty accessories on the shelves and press the Tare all shelves button on Plato's display to calibrate

# Specifications

---

	ROUND TRAY	SINGLE RECTANGULAR TRAY	DOUBLE
<b>Installation on robot</b>	Fits on Top shelf, on Middle shelf and on the Collecting top cover	Fits on Top shelf	Fits on Middle shelf Food accessible from left, right and rear of Plato
<b>Overall dimensions</b>	40.5 cm diameter	530 mm × 432 mm × 60 mm	530 mm × 432 mm × 197 mm
<b>Weight</b>	0.584 kg	1.4 kg	4.7 kg
<b>Max. load</b>			
<b>Top and middle shelf</b>	9.42 kg	8.6 Kg	5.3 Kg
<b>Bussing shelf</b>	19.42 kg	18.6 Kg	5.3 Kg
<b>Color</b>	Black/Gray	gray	gray
<b>Robot clearance to avoid collision</b>	N/A	80 cm diameter	80 cm diameter

## More information

---

